

scrab chopper

scrab chopper



SABEL TECH ST 22-HD



Model SABEL TECH ST 22-HD

Infeed Speed: 30 meters per minute

- Cut Length: +/- 80 mm / 40 mm with four knives
- Number of Rotating Knives: 2
- Number of Stationary Knives: 1
- Infeed Opening: H 19 mm x B 55 mm
- Overall Dimension: H 600 mm, B 460 mm, L 700 mm

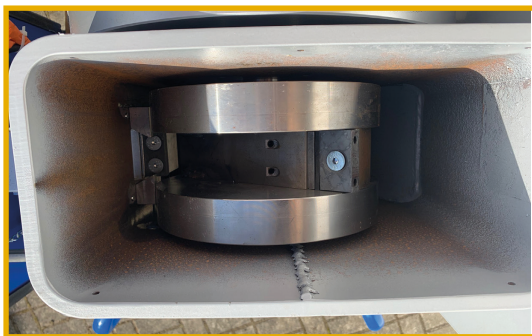


- Machine Weight: +/- 265 kg
- Electrical: 400 V / 50 Hz / 2,2 kW

- Performance:

- * Steel banding 32 x 1,2 mm with clip
- * All sizes of plastic / PET strap
- * Wire and saw blades
- * Tubing and cable
- * Slitter trim

- Incl. Steelframe: +/- 1.000 mm x 750 mm



- CE compliant and easy to serve

- One year warranty

 **Alpine-Sabel**
shredding equipment

Alpine-Sabel GmbH

shredding equipment

Im Seifen 12

D-56412 Oberelbert

phone +49 2608 899 926-0

mobile +49 171 310 59 69

peter@alpine-sabel.de

www.bandzerkleinerer.de